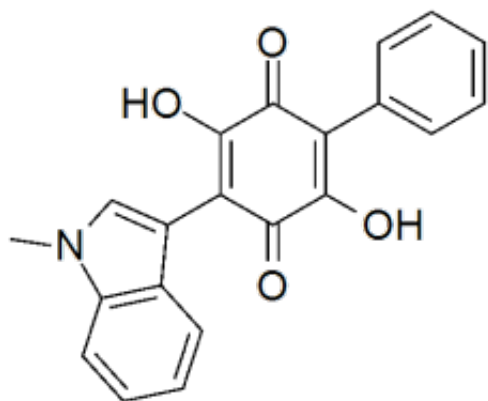


# 2,5-dihydroxy-3-(1-methyl-1H-indol-3-yl)-6-phenyl-2,5-cyclohexadiene-1,4-dione

**Product Code:** M-0512

**Weight:** 25.00mg



## Short Description

High purity 2,5-dihydroxy-3-(1-methyl-1H-indol-3-yl)-6-phenyl-2,5-cyclohexadiene-1,4-dione (MCP2 - has insulin receptor activation potential) includes a comprehensive Certificate of Analysis and all supporting analytical data

## Description

This compound comes with a comprehensive Certificate of Analysis.

Availability: In-Stock

Controlled Substance: No

25 mg;

CAS Not available

O=C(C(O)=C1C2=CN(C)C3=C2C=CC=C3)C(C4=CC=CC=C4)=C(O)C1=O