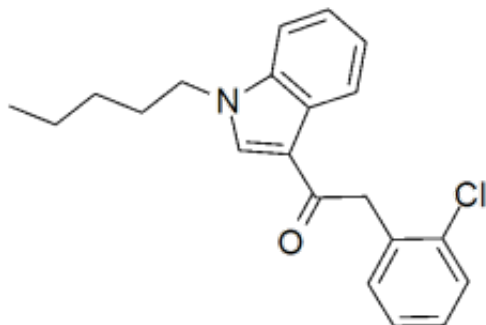


# JWH-203

**Product Code:** J-7290  
**Weight:** 10.00mg



## Short Description

High purity JWH-203 (1-Pentyl-3-(2-chlorophenylacetyl) indole) includes a comprehensive Certificate of Analysis and all supporting analytical data

## Description

This compound comes with a comprehensive Certificate of Analysis.

Availability: In-Stock

Controlled Substance: Yes, C-I, DEA# 7203

10 mg ;

CAS 864445-54-5

O=C(CC1=CC=CC=C1Cl)C2=CN(CCCCC)C3=C2C=CC=C3