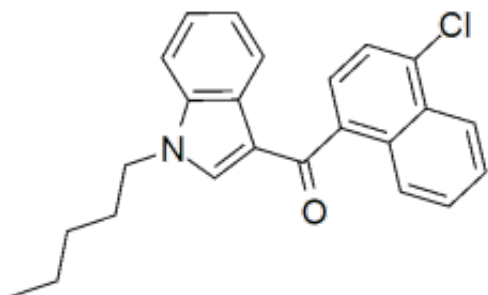


# JWH-398

**Product Code:** J-7300  
**Weight:** 10.00mg



## Short Description

High purity JWH-398 (1-Pentyl-3-(4-chloro-1-naphthoyl) indole) includes a comprehensive Certificate of Analysis and all supporting analytical data

## Description

This compound comes with a comprehensive Certificate of Analysis.

Availability: In-Stock

Controlled Substance: Yes, C-I, DEA# 7398

10 mg ;

CAS 1292765-18-4

O=C(C1=C(C=CC=C2)C2=C(Cl)C=C1)C3=CN(CCCCC)C4=C3C=CC=C4